



Palm Beach National

Water Supply and Fireground Operations

April 21, 2016

Battalion Chief Matt Gaffney

ISO CLASS 3

All homes and businesses within 5 road miles of a PBCFR station

St 32 is 2.2 miles from furthest address

Insurance discounts possible



Public Information Office

www.pbcrf.org

405 Pike Road

West Palm Beach, FL 33411

(561) 616-7077

FAX: (561) 616-6931

Fire Rescue Administrator
Chief Jeff Collins

□

*"An Equal Opportunity
Affirmative Action Employer"*

Palm Beach County Fire Rescue NEWS RELEASE

FOR MORE INFORMATION, CALL: Palm Beach County Fire
Rescue Insurance Line @ 561-233-0066

July 24, 2013

WHO: Palm Beach County Fire Rescue

WHAT: Fire Rescue Improves Countywide Insurance Rating

DETAILS: Property insurance premiums could soon be reduced for many Palm Beach County residents. Property owners will reap the benefits of work done by Palm Beach County Fire Rescue to enhance emergency services provided to Palm Beach County residents. In its most recent evaluation by the Insurance Services Office, Inc. (ISO), the Department was successful in lowering the County's fire protection rating from the current Class 4/9 split rating to a Class 3 rating for all properties located within 5 road miles of a Palm Beach County Fire Rescue station response area.

To improve the rating, fire rescue personnel demonstrated that they have the ability to provide a water tanker shuttle operation anywhere in the County. As a result, a property's distance from a fire hydrant is no longer important in determining local insurance rates. The Department anticipates that property owners around the County could see premium reductions. Commercial properties should also see reduced rates.

Fire Rescue Administrator Jeff Collins credits the dedication, teamwork, and community commitment displayed by his employees for the success of the endeavor. This was a cooperative effort involving all divisions of fire rescue including, fire operations, fire prevention, training and supporting departments.

The new Class 3 rating becomes effective August 1, 2013. The Department urges Palm Beach County property owners to contact their insurance carriers to find out if their premiums will be reduced due to the improved ISO rating. A copy of the ISO letter is available on our website at www.pbcrf.org.

#####

WATER SOURCES

- Tank Supply
- Hydrant
- Static Water Source
- Dry Hydrant
- Relay Operation
- Water Shuttle
- Nurse Tender Operation
- Direct Pumping



INITIAL TANK SUPPLY

- Engines - 750 or 1,000-gallons
- Quints - 500-gallons
- Brush Trucks - 750-gallons
- Tenders - 3,000-gallons

Water Supply

Municipal Hydrant



Drafting



SHUTTLE OPERATION

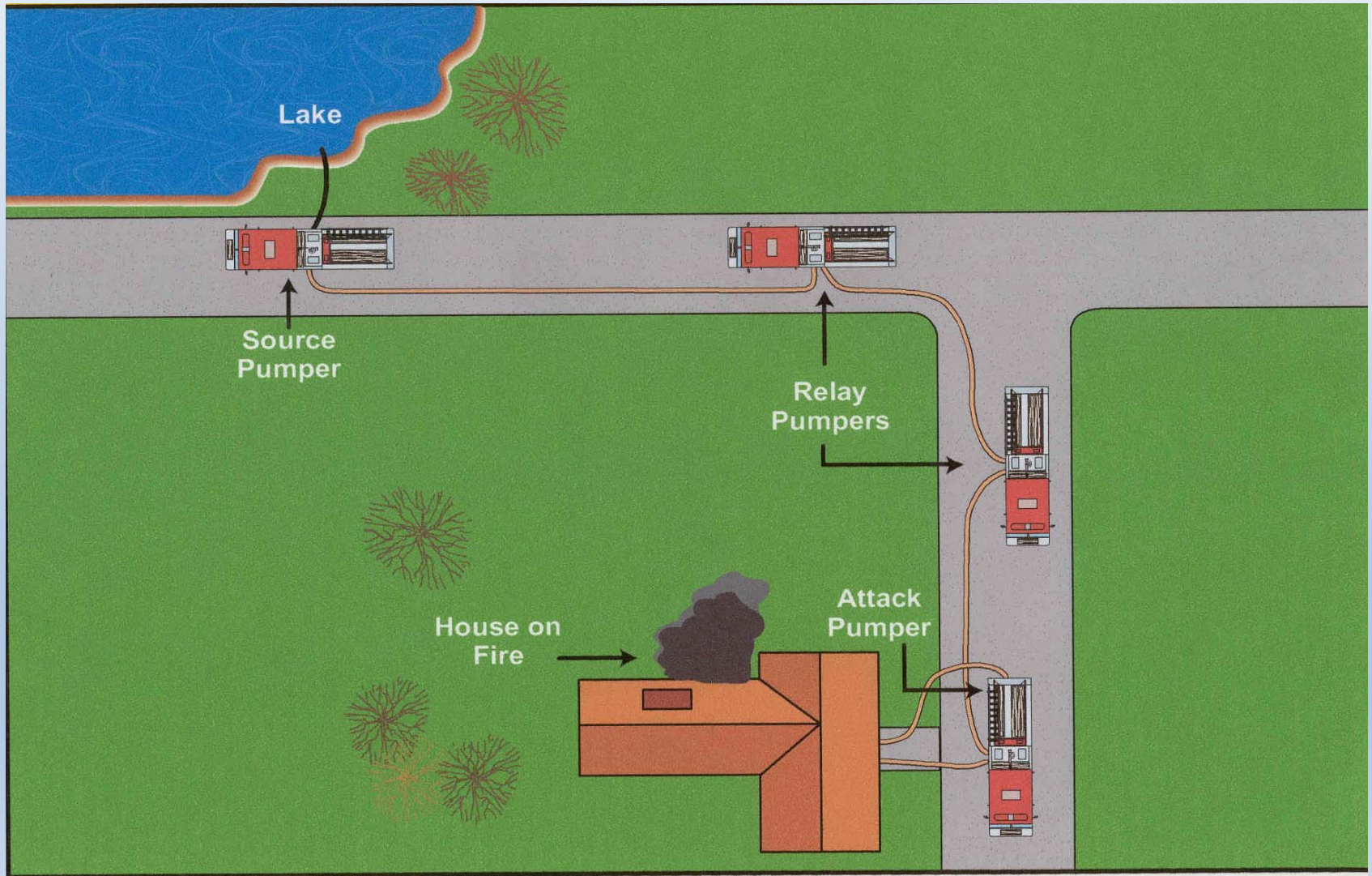
3000 Gallon Dump Tank



Draft From Dump Tank

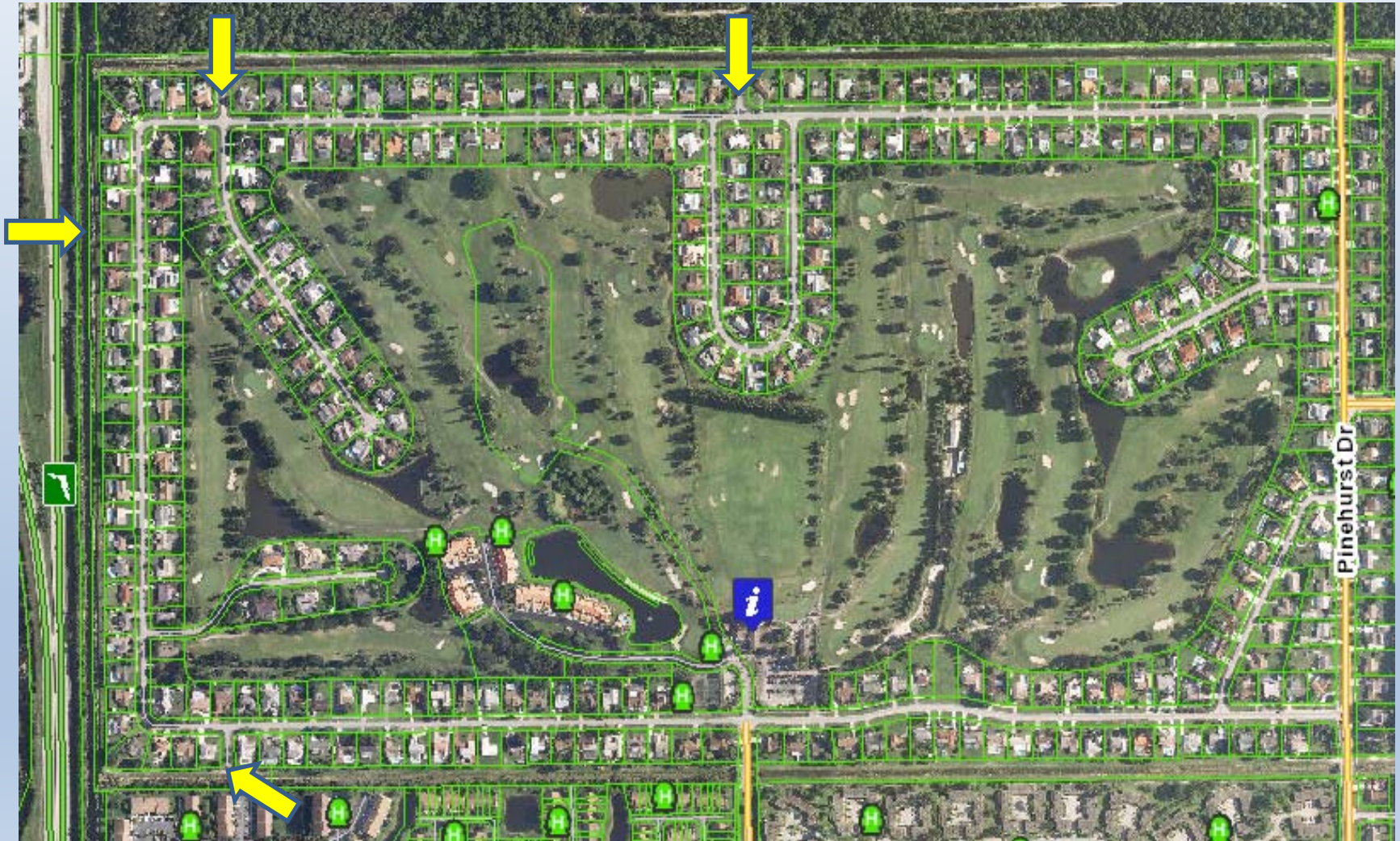


RELAY PUMPING

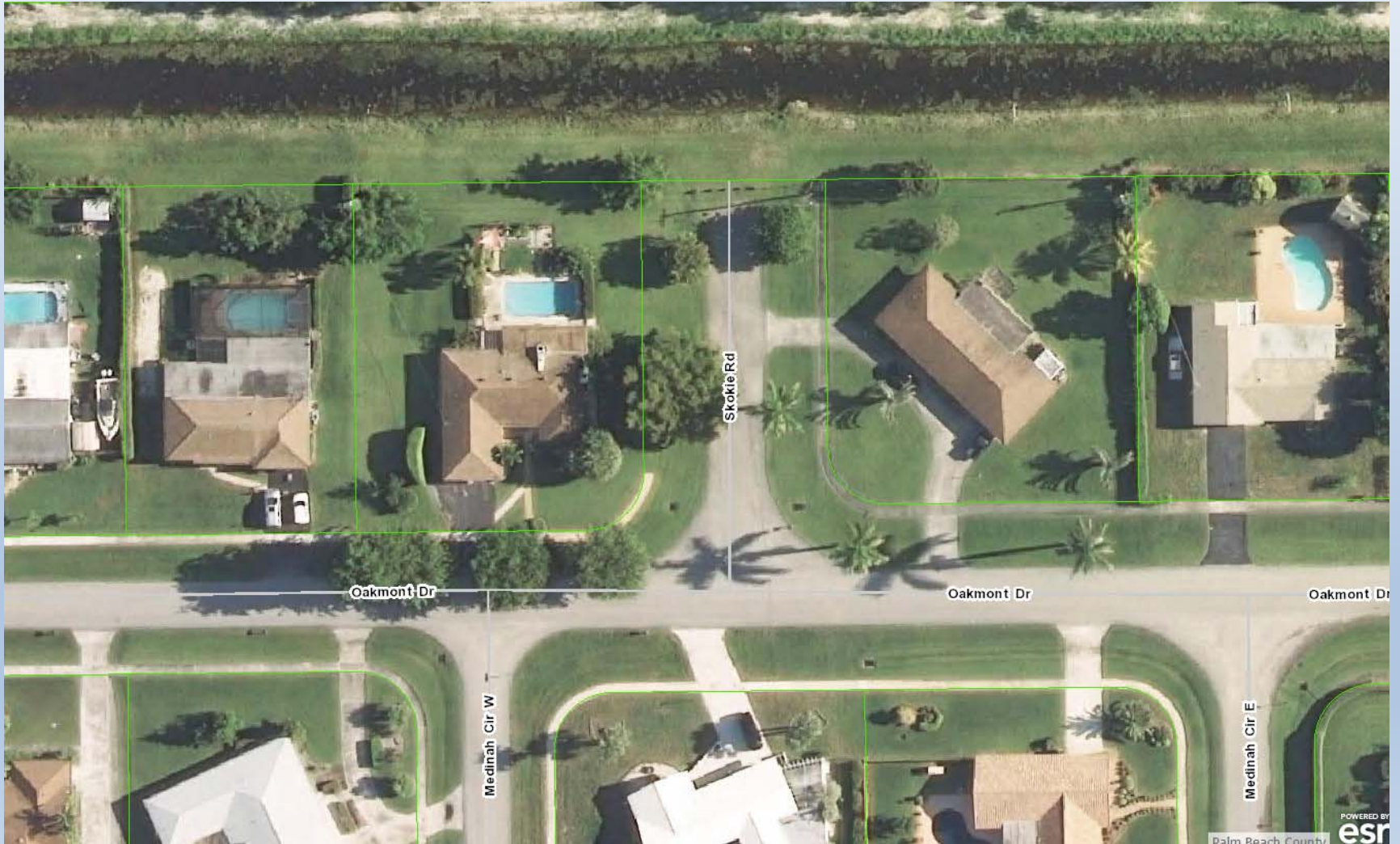


PALM BEACH NATIONAL

OVERVIEW/DRAFTING SITES



DRAFTING ACCESS



DRAFT ACCESS IS CRITICAL

Canal Easement



Drafting Access



DRAFT ACCESS

- Vacant lot on west side of community will provide ready access for Brush 32



DRY HYDRANTS

- Placed strategically
- Designed for drafting
- Inspected annually

